

ZAXIS-5G series

**HITACHI**

Reliable solutions

# ZAXIS350H



## HYDRAULIC EXCAVATOR

Model Code : ZX350H-5G

Engine Rated Power : 184 kW (246 HP)

Operating Weight : ZX350H-5G : 32 900 kg

Backhoe Bucket : ISO Heaped : 2.00 m<sup>3</sup>



# SPECIFICATIONS

## ENGINE

Model .....	Isuzu AH-6HK1X
Type .....	4-cycle water-cooled, direct injection
Aspiration .....	Turbocharged, intercooled
No. of cylinders .....	6
Rated power	
ISO 9249, net .....	184 kW (246 HP) at 2 000 min <sup>-1</sup> (rpm)
Piston displacement ..	7.790 L

## HYDRAULIC SYSTEM

### Hydraulic Pumps

Main pumps .....	2 variable displacement axial piston pumps
Maximum oil flow ..	2 x 279 L/min

### Hydraulic Motors

Travel .....	2 variable displacement swash plate piston motors
Swing .....	1 swash plate piston motor

### Relief Valve Settings

Implement circuit .....	34.3 MPa (350 kgf/cm <sup>2</sup> )
Swing circuit .....	32.4 MPa (330 kgf/cm <sup>2</sup> )
Travel circuit .....	34.3 MPa (350 kgf/cm <sup>2</sup> )

## UPPERSTRUCTURE

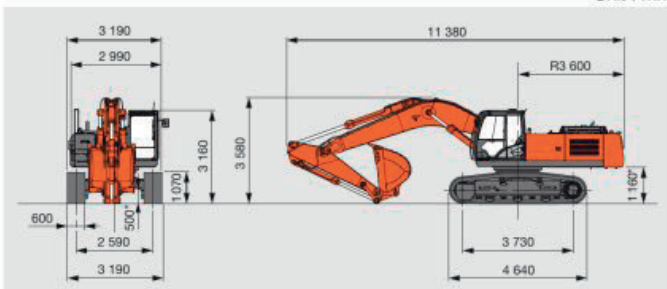
Swing speed .....	10.7 min <sup>-1</sup> (rpm)
-------------------	------------------------------

## UNDERCARRIAGE

Travel speeds .....	High / Low : 0 to 4.9 km/h / 0 to 3.1 km/h
Maximum traction force ..	298 kN (30 400 kgf)
Gradeability .....	70% (35 degree) continuous

## DIMENSIONS

Unit : mm



\*Excluding track shoe lug

## BUCKET AND ARM DIGGING FORCES

	6.4 m H-boom / 2.33 m arm
Bucket digging force* ISO	246 kN ( 25 100 kgf)
Bucket digging force* SAE : PCSA	214 kN ( 21 800 kgf)
Arm crowd force* ISO	250 kN ( 25 500 kgf)
Arm crowd force* SAE : PCSA	239 kN ( 24 400 kgf)

\*At power boost

## WEIGHTS AND GROUND PRESSURE

### ZX350H-5G :

Equipped with 6.4 m H-boom, 2.33 m arm and 2.00 m<sup>3</sup> bucket (ISO heaped).

Shoe type	Shoe width	kg	kPa (kgf/cm <sup>2</sup> )
Triple grouser	600 mm	32 900	67 (0.68)

## SERVICE REFILL CAPACITIES

Fuel tank .....	630.0 L
Engine coolant .....	35.0 L
Engine oil .....	36.0 L
Swing device .....	15.7 L
Travel device (each side) .....	9.2 L
Hydraulic system .....	340.0 L
Hydraulic oil tank .....	180.0 L

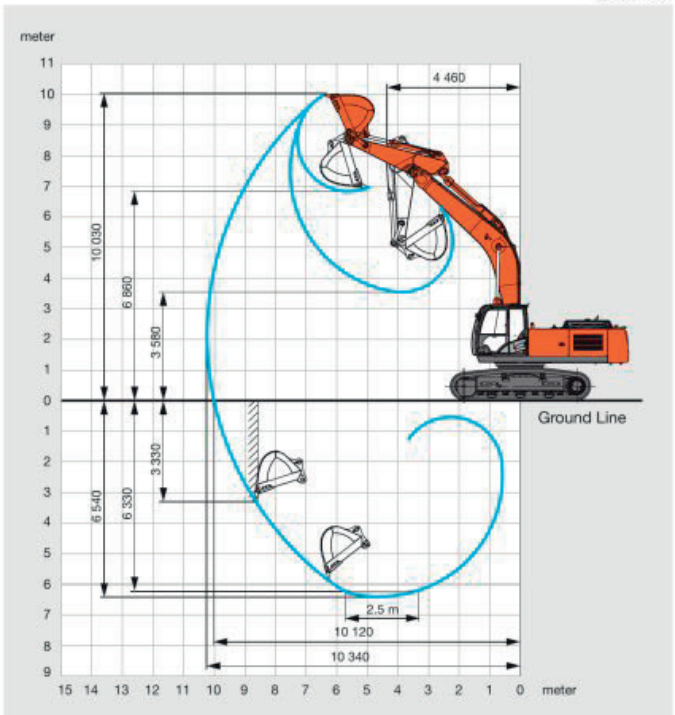
## BUCKET

Capacity		Width		No. of teeth	Weight	Recommendation
ISO heaped	CECE heaped	Without side cutters	With side cutters			6.4 m H-boom 2.33 m arm
2.00 m <sup>3</sup>	1.57 m <sup>3</sup>	1 570 mm	1 630 mm	6	1 670 kg	⊙

⊙ Suitable for material with density of 1 600 kg / m<sup>3</sup> or less

## WORKING RANGES

Unit : mm



Excluding track shoe lug

These specifications are subject to change without notice.

Illustrations and photos show the standard models, and may or may not include optional equipment, accessories, and all standard equipment with some differences in color and features.

Before use, read and understand the Operator's Manual for proper operation.